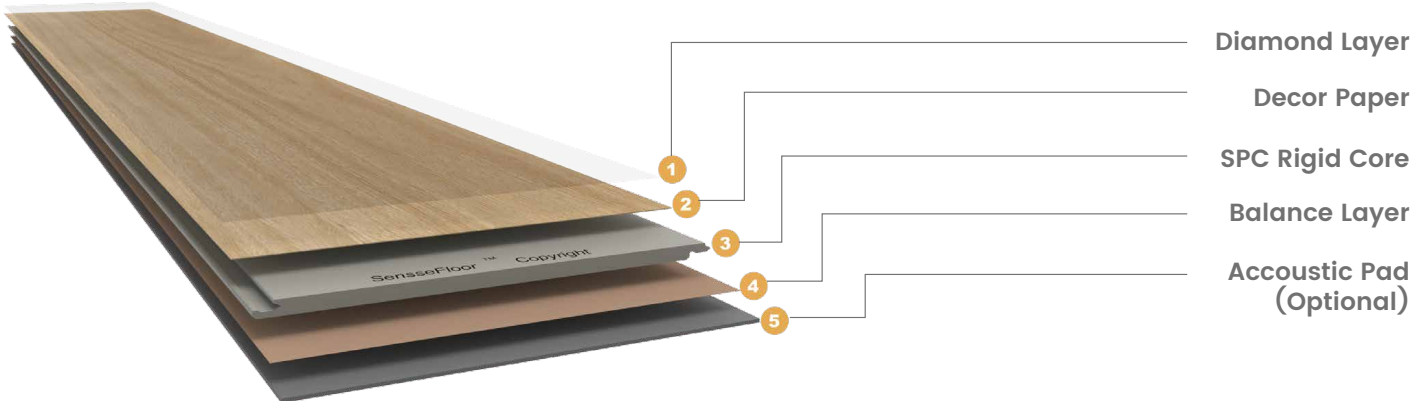




DIAMOND SPC

Diamond SPC vinyl flooring is a revolutionary breakthrough of regular SPC flooring, the main content is pure SPC rigid core board which delivers Extreme Stability, Super Fire-proof, Completely Water-proof, The top layer impregnated with aluminum oxide which brings indentation Resistance, Scratch Resistance and Durability, Sense Diamond SPC vinyl flooring offers value and performance through its innovative Diamond surface technology. The low maintenance high performing Diamond finish layer is resistant to scratching, scuffing and burning cigarettes. While Reducing Sound Transmission. Designed with various decor paper and registered wood textures, Diamond SPC flooring is the best choice for both residential and commercial applications.



Features

Super Water Resistant

SPC rigid core board is a water proof material, it is almost no thickness swelling, without the worry of damage or staining from water and moisture and counteracts the accidents that happen in our busy lives.

Anti Scratch

Treated with Aluminum oxide which impregnated to the top layer of the floor, Sense diamond surface technology offers the best surface protection when the furniture moving that scratching happened.

Anti Cigarette Burning

Cigarette burning is the headache compliment from ordinary products, Sense

Diamond surface technology offers high protection to the top of the floor against the cigarette burning.

Soiling & Corrosion Resistance

With the special treatment on the top layer, Sense Diamond surface has a high performance of soiling and corrosion resistant, It's easy to clean the main liquid stains with wet mop or detergent.

Fire Resistance

With high performance of B1 fire resistance and thermal insulation, Diamond SPC flooring offers a very safe and comfortable environment and gives more escaping time in case of the fire accident.



Product's Parameter

Thickness	4.0/5.0 mm
Abrasion Class	AC3/AC4/AC5
Surface Texture	Wood Embossed/EIR/Stone
Installation Method	Floating (Click system)



Technical Specification

Item	Standard	Result
Density		2.0-2.1g/cm ³
Overall Thick	EN ISO 24236	±0.15mm
Dimensional Stability after exposure to heat	EN ISO 24342	< 0.1%
Curling after exposure to heat	EN 434	≤0.5mm
Thickness Swelling	ISO 24336:2005	≤1%
Abrasion Resistance	EN 13329	AC/3/4/5
Locking Strength	EN ISO 24334	>120N(50mm)
Residual Indentation	EN ISO 24343-1	< 0.1mm
Castor Chair	ISO 4918	After 25000 cycles, no visible damage
Scratch Resistance	EN 438	Level 4
Slip Resistance	EN 13893	Class DS
Fire Resistance	EN 13501-1	Bfl-S1
Stain & Chemical Resistance	EN ISO 26987	Class 0
Cigarette Burn Test	EN 438-2	Level 4
Color Fastness	ISO 105-B02	≥Grade 6
Formaldehyde Emission	EN 717-3	0

Plank Size



145X1220mm(6"X48")



199X1220mm(8"X48")

Tile Size



302X604mm(12"X24")

* The recommend size is for your reference,the actual dimension will strictly follow the confirmed order.

Performance Comparison Chart

Performance	Laminated Flooring	Luxury Vinyl Flooring	Diamond SPC Flooring	Ceramic Tiles
Water Resistance	★	★★★	★★★	★★★
Fire Resistance	★	★★★	★★★	★★★
Slipery Resistance	★★★	★★★	★★★	★
Impact Resistance	★★	★★★	★★★	★
Stain Resistance	★★★	★★	★★★	★★★
Anti-Scratch	★★★	★	★★★	★★★
Anti-Cigarette Burning	★★★	★	★★★	★★★
Formaldehyde Release	★	★★★	★★★	★★★
Acoustic Absorption	★	★★★	★★★	★★
Installation	★★★	★★	★★★	★
Replacement	★★★	★★	★★★	★
Cost Effective	★★★	★★	★★	★



K0004

Abrasion Class	AC3/AC4/AC5
Surface Texture	EIR Wood Embossed
Dimension	1220X199 mm



K0004-18



K0004-2



K0004-5



K0004-10



K0004-51

* The scanned design might be variation. The exact color should be confirmed with physical samples.

K0026

Abrasion Class	AC3/AC4/AC5
Surface Texture	EIR Wood Embossed
Dimension	1220X199 mm



K0026-2



K0026-7



K0026-6



K0026-15



K0026-18

* The scanned design might be variation. The exact color should be confirmed with physical samples.

K0061

Abrasion Class	AC3/AC4/AC5
Surface Texture	EIR Wood Embossed
Dimension	1220X199/145 mm



K0061-3



K0061-7



K0061-2



K0061-8



K0061-9

* The scanned design might be variation. The exact color should be confirmed with physical samples.



91785

Abrasion Class	AC3/AC4/AC5
Surface Texture	EIR Wood Embossed
Dimension	1220X199 mm



91785-1



91785-2



91785-3



91785-4



91785-5



91785-6

* The scanned design might be variation. The exact color should be confirmed with physical samples.



91790

Abrasion Class	AC3/AC4/AC5
Surface Texture	EIR Wood Embossed
Dimension	1220X199 mm



91790-2



91790-5



91790-7



91790-8



91790-9



91790-10

* The scanned design might be variation. The exact color should be confirmed with physical samples.

91799

Abrasion Class	AC3/AC4/AC5
Surface Texture	EIR Wood Embossed
Dimension	1220X199 mm



91799-2



91799-5



91799-7



91799-8



* The scanned design might be variation. The exact color should be confirmed with physical samples.



K0155

Abrasion Class	AC3/AC4/AC5
Surface Texture	EIR Wood Embossed
Dimension	1220X199 mm



K0155-1PZ



K0155-5PZ



K0155-8PZ



K0155-11PZ



K0155-13PZ



K0155-14PZ



K0155-15PZ



K0155-16PZ



K0155-18PZ



K0155-19PZ



K0155-24PZ

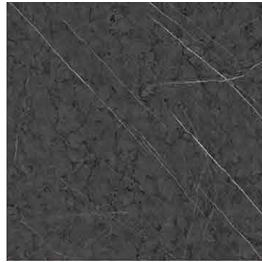
* The scanned design might be variation. The exact color should be confirmed with physical samples.

Mirror

Abrasion Class	AC3/AC4/AC5
Surface Texture	Mirror Surface (Gloss Level≥100°)
Dimension	604X302 mm



90809



90810



90811



90812



90813



90814



90815



90816



90818



90819



90820



90821



90822



90824



90825



90826



90827



90828



90830



90831

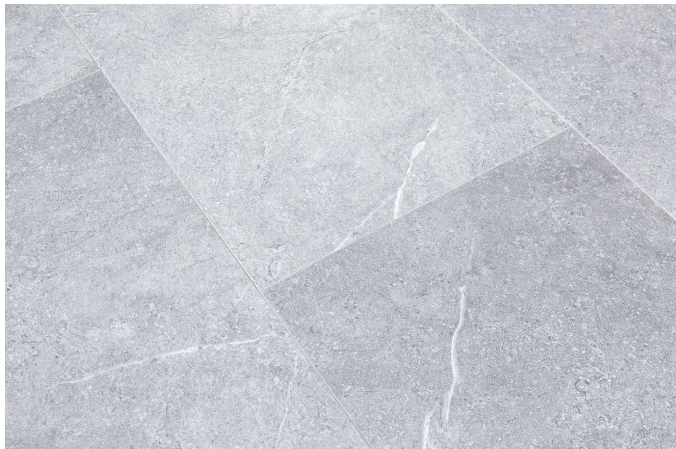


* The scanned design might be variation. The exact color should be confirmed with physical samples.

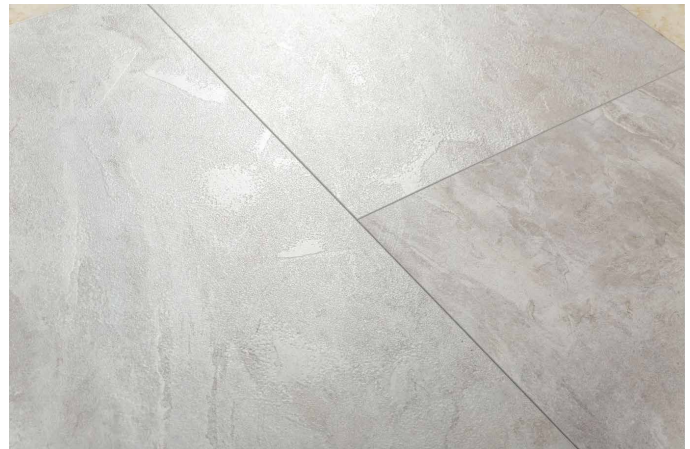


Slate

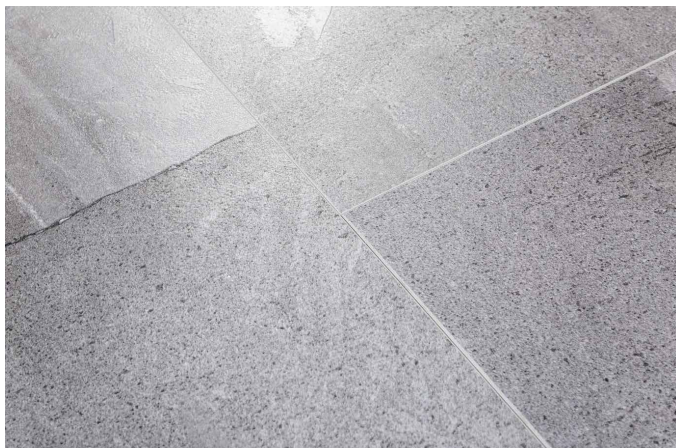
Abrasion Class	AC3/AC4/AC5
Surface Texture	Slate Embossed
Dimension	604X302 mm



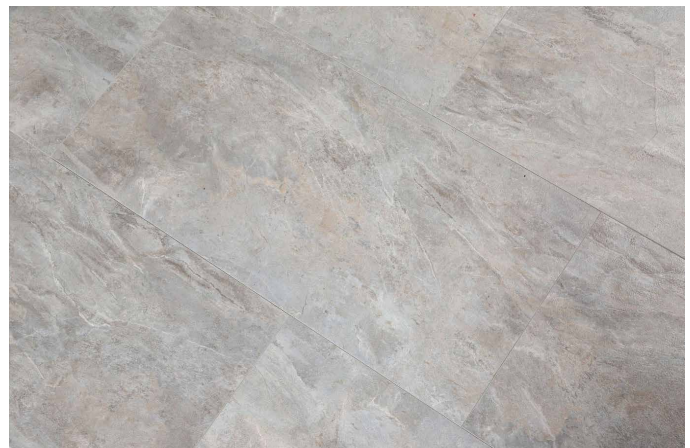
MT9095



MT9096



MT9097



MT9098

* The scanned design might be variation. The exact color should be confirmed with physical samples.